

THE PORTICO COLLECTION

THE STRASBOURG



ELEVATION C



ELEVATION A



ELEVATION B

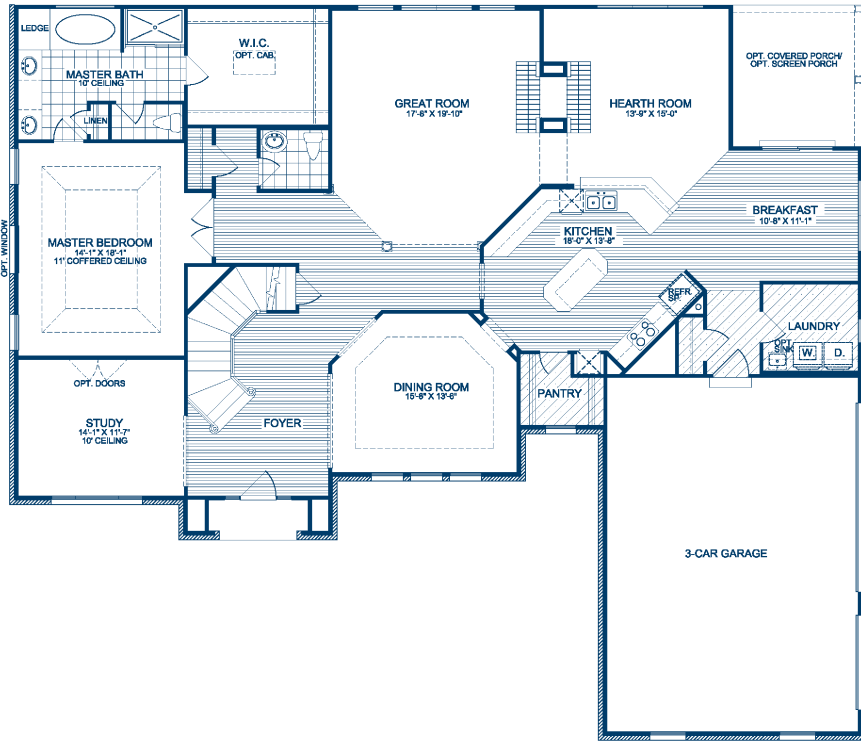


ELEVATION D

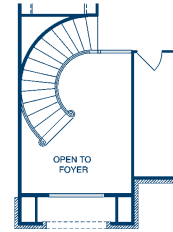
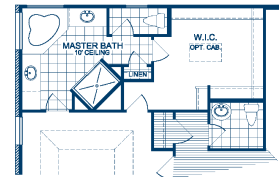
THE PORTICO COLLECTION

THE STRASBOURG

FIRST FLOOR

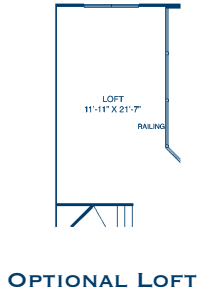
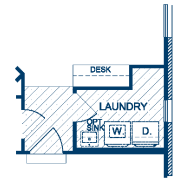


OPTIONAL MASTER BATH SUITE

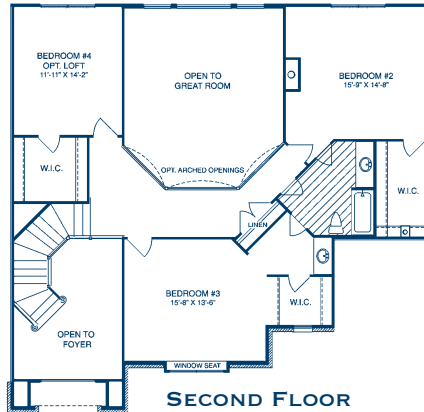


OPTIONAL CURVED STAIRCASE

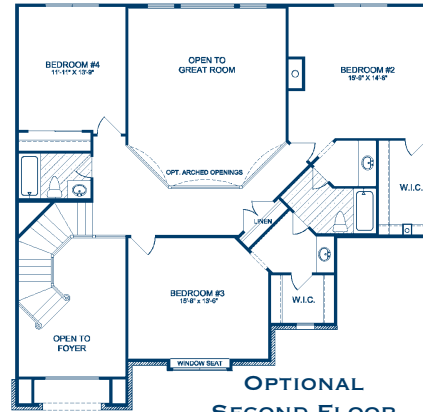
OPTIONAL DESK/LAUNDRY



OPTIONAL LOFT



SECOND FLOOR



OPTIONAL SECOND FLOOR

The dramatic entry will welcome your guests into this impressive 1 1/2 story home. Adjacent to the entry are the formal dining room and the study. The flow of the first floor and the placement of the central kitchen are ideal for entertaining-formal or casual. The massive 2-story great room is separated from the comfortable hearth room by a see-through fireplace. Tucked away, the home offers the convenience of a first floor master bedroom, complete with an elegant bath and oversized walk-in closet. Upstairs, the balcony overlook of the great room and angled staircase is breathtaking. The second floor offers two additional bedrooms, with a Jack-n-Jill bath. An additional room is perfect for a fourth bedroom or a hobby room. A spectacular alternative would be to pursue an option to convert that room into a loft overlooking the great room.



Making Our Homes Yours.
FulfordHomes.com

Plan Number: 2380 • COPYRIGHT © 2007 BY FULFORD CONSTRUCTION, INC. These plans are the sole and absolute property of Fulford Construction, Inc. Any use, copying or reproduction of these plans without the express written consent of Fulford Construction is illegal. All floorplans are based on Elevation A. Please contact the sales staff for details that may change with construction of other elevations.

NOTE: Front porches and windows may vary between elevations. Due to continued improvements in our design, there may be variations in room dimensions, door swings and window and door locations. We reserve the right to substitute materials of comparable quality. Renderings are artist's conception only and will vary from the actual home in precise detail. Please contact the Community Sales Manager for exact information and details. All information is subject to change without notice. **Realtor Cooperation Welcomed**

