

# THE WOODFIELD COLLECTION

## THE BRUNSWICK



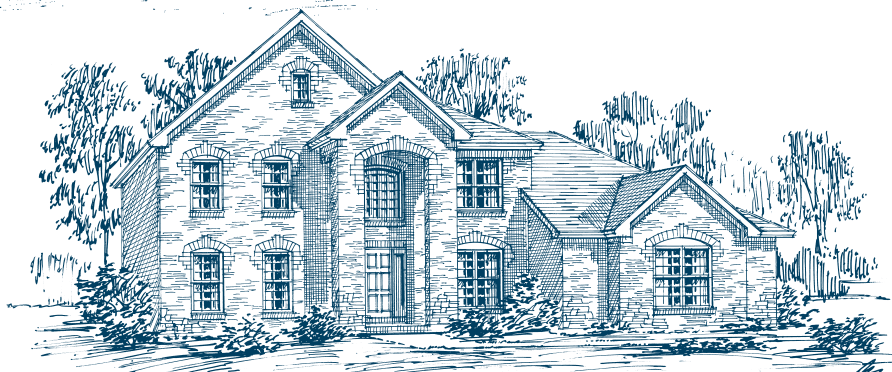
ELEVATION C



ELEVATION A



ELEVATION B

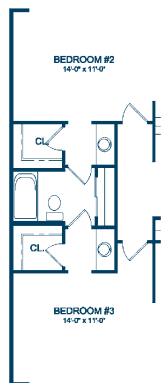
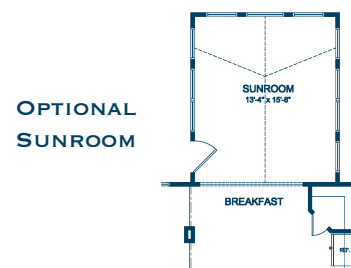
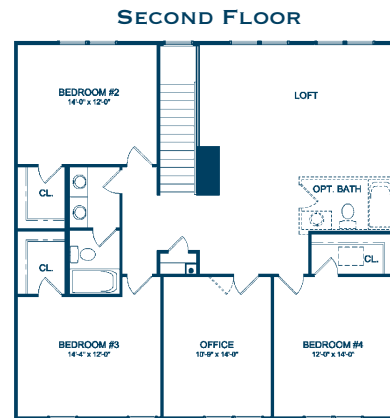
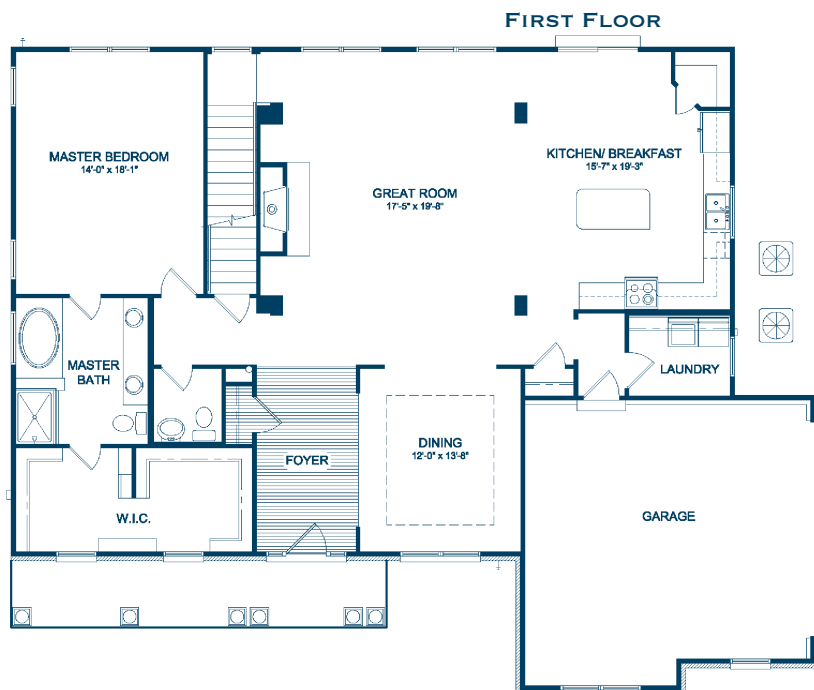


ELEVATION E

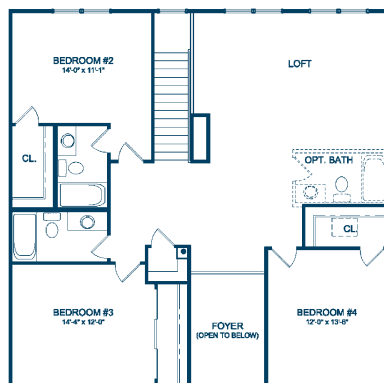
(SHOWN WITH OPTIONAL STONE)  
ELEVATION D ALSO AVAILABLE

# THE WOODFIELD COLLECTION

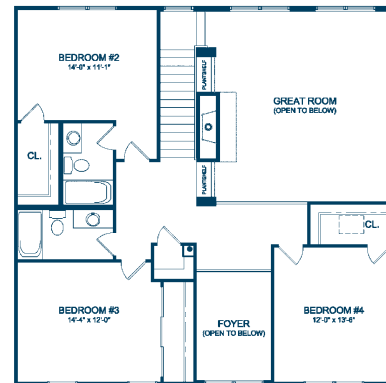
## THE BRUNSWICK



**OPTIONAL JACK-N-JILL BATH**  
(AVAILABLE ONLY WITH  
OPTIONAL SECOND FLOOR BATH)



**OPTIONAL SECOND FLOOR PLAN #1**



**OPTIONAL SECOND FLOOR PLAN #2**

- Inviting open floor plan for livability and efficiency
- First floor master bedroom and bath with expansive walk-in closet
- Great working kitchen area with extensive cabinets and walk-in pantry
- Oversized upstairs bedrooms, all with walk-in closets, and standard home office
- Multiple second floor plan opportunities to meet any family's needs

Making Our Homes Yours.  
**FulfordHomes.com**

Plan Number: 6327 • COPYRIGHT © 2007 BY FULFORD CONSTRUCTION, INC. These plans are the sole and absolute property of Fulford Construction, Inc. Any use, copying or reproduction of these plans without the express written consent of Fulford Construction is illegal. All floorplans are based on Elevation A. Please contact the sales staff for details that may change with construction of other elevations.

NOTE: Front porches and windows may vary between elevations. Due to continued improvements in our design, there may be variations in room dimensions, door swings and window and door locations. We reserve the right to substitute materials of comparable quality. Renderings are artist's conception only and will vary from the actual home in precise detail. Please contact the Community Sales Manager for exact information and details. All information is subject to change without notice. **Realtor Cooperation Welcomed**

