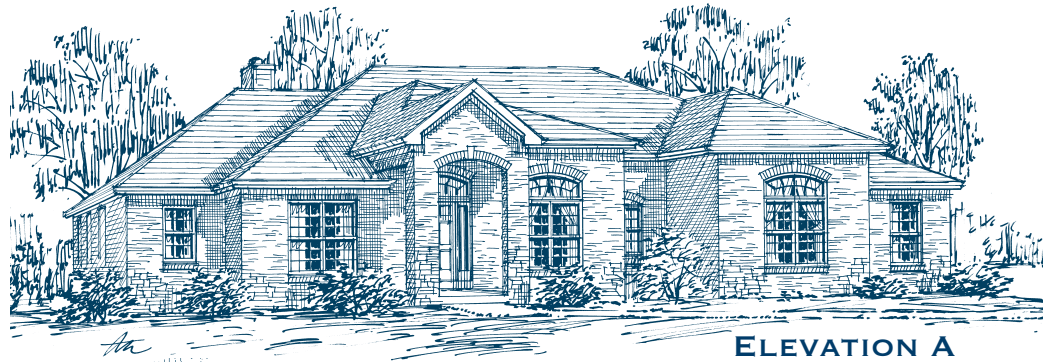


# THE WOODFIELD COLLECTION

## THE ARMITAGE



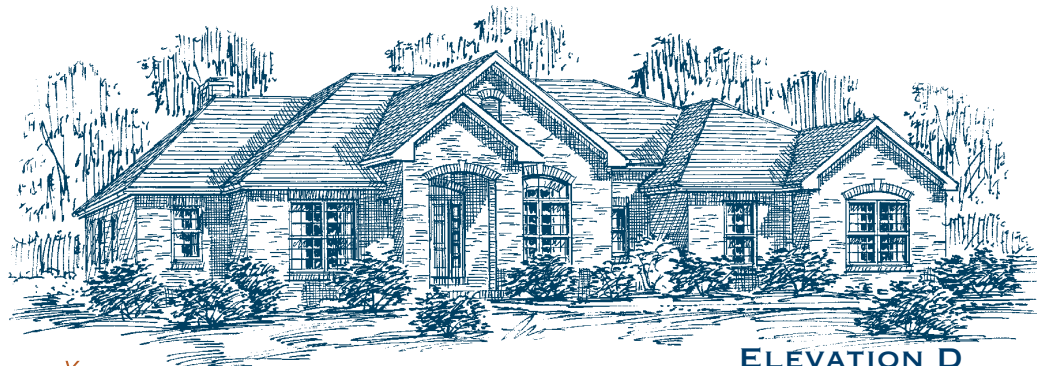
ELEVATION C



ELEVATION A



ELEVATION B

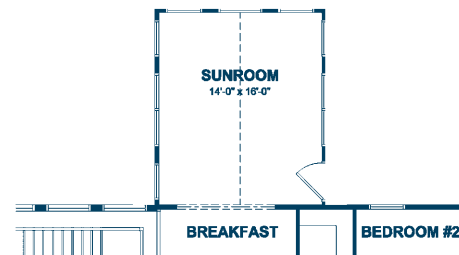
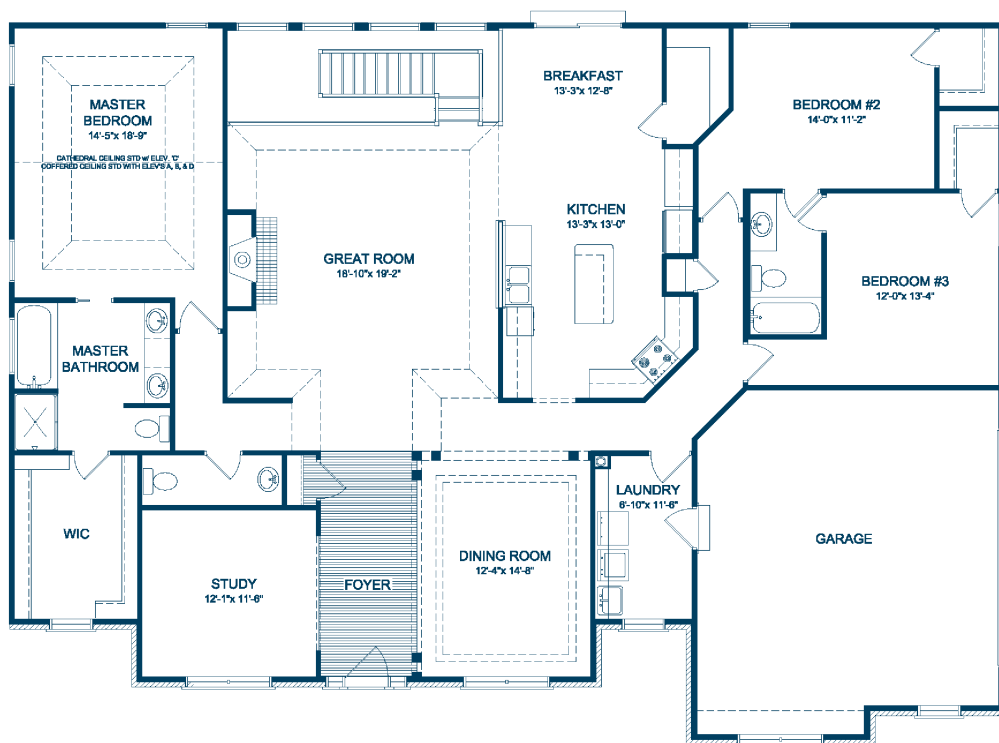


ELEVATION D

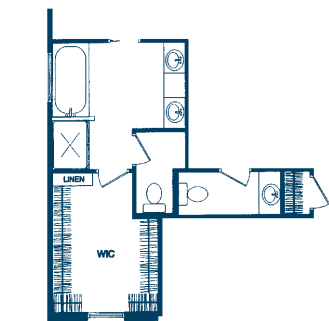
# THE WOODFIELD COLLECTION

## THE ARMITAGE

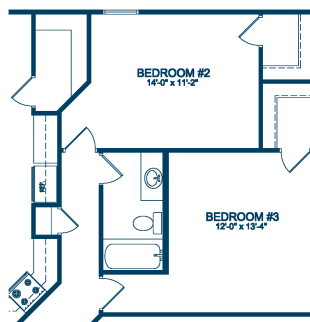
### FIRST FLOOR



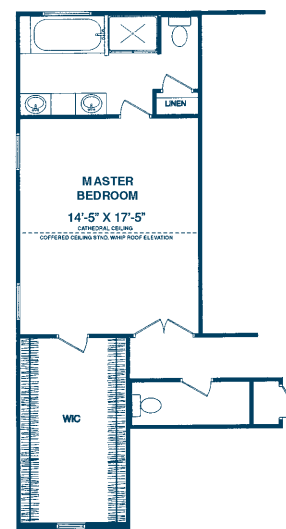
OPTIONAL SUNROOM



OPTIONAL COMMODE CLOSET



OPTIONAL HALL BATH



OPTIONAL MASTER SUITE

- Spacious great room with beautiful wall of windows and atrium opening to lower level
- Cathedral ceiling in spacious master bedroom
- Oversized second and third bedrooms with Jack-n-Jill bath
- 10' ceilings in study and formal dining room off entry foyer (except on Elevation D which is 8')
- Great working kitchen with planning desk and walk-in pantry
- Transom windows on all front elevations



Plan Number: 9268 • COPYRIGHT © 2007 BY FULFORD CONSTRUCTION, INC. These plans are the sole and absolute property of Fulford Construction, Inc. Any use, copying or reproduction of these plans without the express written consent of Fulford Construction is illegal. All floorplans are based on Elevation A. Please contact the sales staff for details that may change with construction of other elevations.

NOTE: Front porches and windows may vary between elevations. Due to continued improvements in our design, there may be variations in room dimensions, door swings and window and door locations. We reserve the right to substitute materials of comparable quality. Renderings are artist's conception only and will vary from the actual home in precise detail. Please contact the Community Sales Manager for exact information and details. All information is subject to change without notice. **Realtor Cooperation Welcomed**

