

THE PORTICO COLLECTION

THE ARDENNE



ELEVATION C



ELEVATION A



ELEVATION B

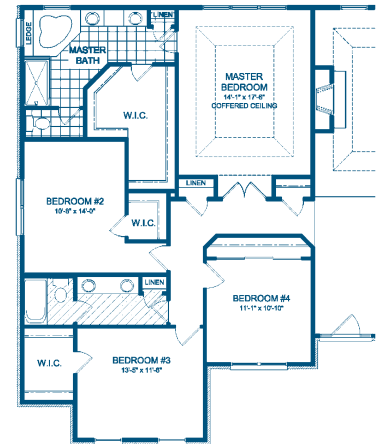


ELEVATION D

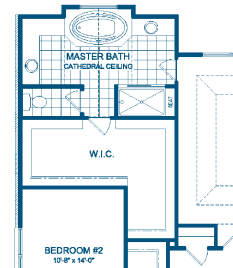
THE PORTICO COLLECTION

THE ARDENNE

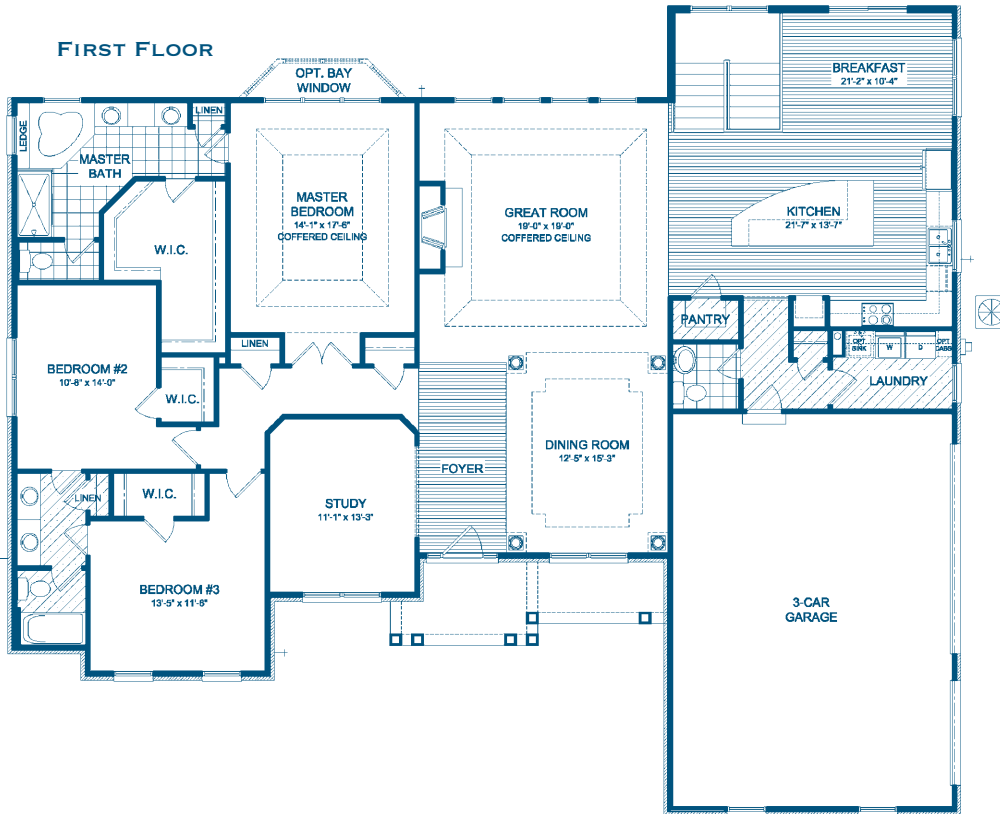
OPTIONAL FOUR BEDROOM PLAN



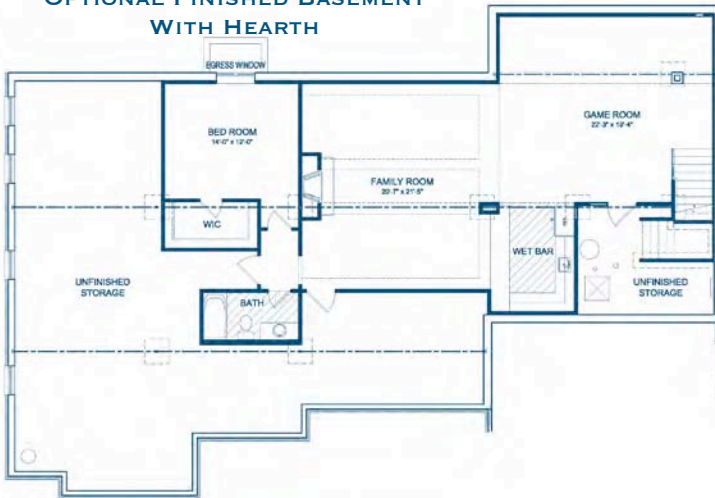
OPTIONAL MASTER BATH



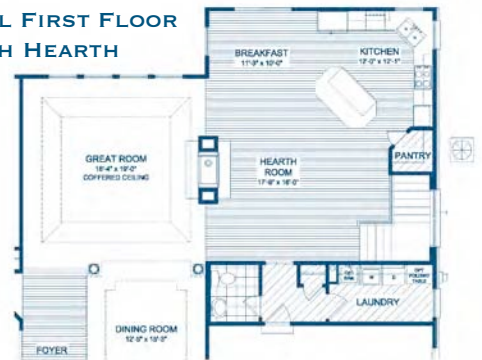
FIRST FLOOR



OPTIONAL FINISHED BASEMENT WITH HEARTH



OPTIONAL FIRST FLOOR WITH HEARTH



This atrium ranch shows with flair and elegance and is perfect for family living. The great room, with its coffered ceiling, promises to entertain in style. The working kitchen opens to the great room, and the dining room space is highlighted by columns at the corners of the room. If you don't need the standard formal living room, you may opt to convert it to fourth bedroom. Either way, you'll enjoy the privacy of the master bedroom and its luxurious, corner bath.



Making Our Homes Yours.
FulfordHomes.com

Plan Number: 2259 • COPYRIGHT © 2007 BY FULFORD CONSTRUCTION, INC. These plans are the sole and absolute property of Fulford Construction, Inc. Any use, copying or reproduction of these plans without the express written consent of Fulford Construction is illegal. All floorplans are based on Elevation A. Please contact the sales staff for details that may change with construction of other elevations.

NOTE: Front porches and windows may vary between elevations. Due to continued improvements in our design, there may be variations in room dimensions, door swings and window and door locations. We reserve the right to substitute materials of comparable quality. Renderings are artist's conception only and will vary from the actual home in precise detail. Please contact the Community Sales Manager for exact information and details. All information is subject to change without notice. **Realtor Cooperation Welcomed**

