

THE PORTICO COLLECTION

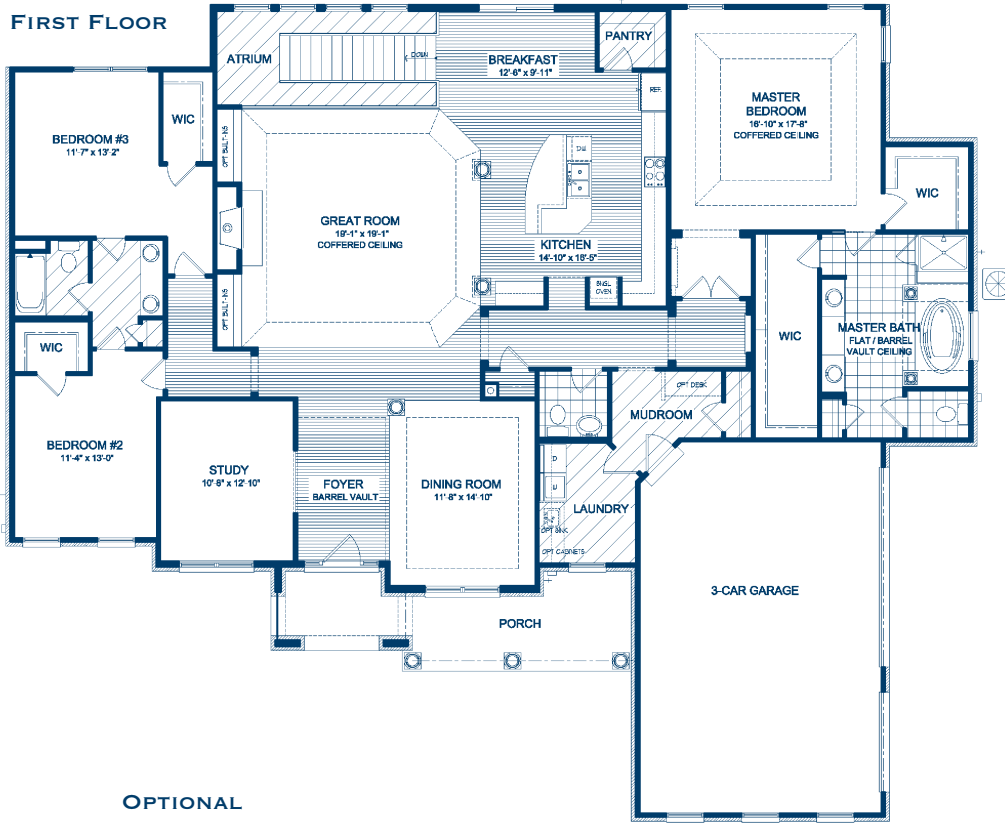
THE BRITTANY



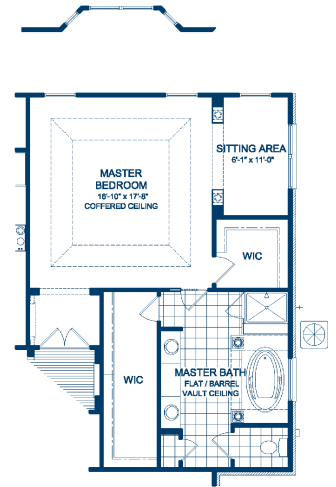
THE PORTICO COLLECTION

THE BRITTANY

FIRST FLOOR

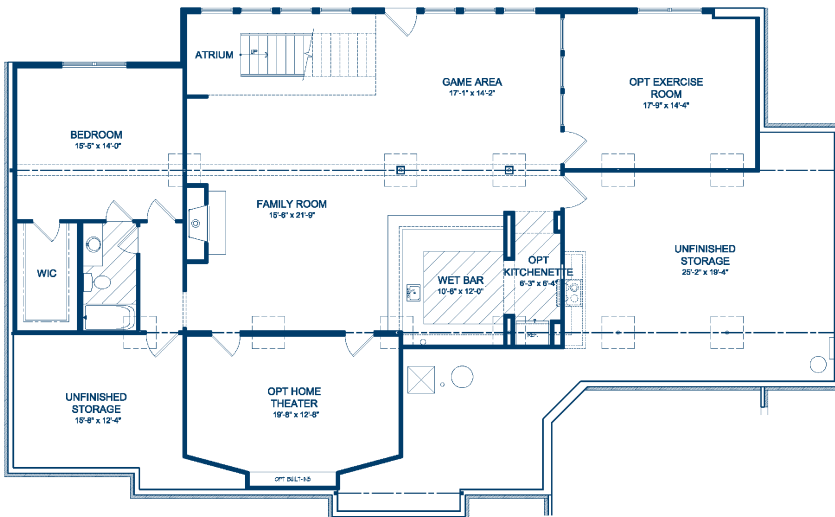


OPTIONAL BAY



OPTIONAL SITTING AREA

OPTIONAL FINISHED BASEMENT



This gorgeous three-bedroom two and a half-bath ranch is ideal for empty nesters and growing families alike. The entry foyer opens to a huge great room with a beautiful fireplace. The master suite features a large walk-in closet and luxurious master bath, including a separate garden tub and standing shower. The gourmet kitchen features a center island and large pantry, and the adjacent study is the perfect place for a home office or small library.



Plan Number: 6304 • COPYRIGHT © 2007 BY FULFORD CONSTRUCTION, INC. These plans are the sole and absolute property of Fulford Construction, Inc. Any use, copying or reproduction of these plans without the express written consent of Fulford Construction is illegal. All floorplans are based on Elevation A. Please contact the sales staff for details that may change with construction of other elevations.

NOTE: Front porches and windows may vary between elevations. Due to continued improvements in our design, there may be variations in room dimensions, door swings and window and door locations. We reserve the right to substitute materials of comparable quality. Renderings are artist's conception only and will vary from the actual home in precise detail. Please contact the Community Sales Manager for exact information and details. All information is subject to change without notice. **Realtor Cooperation Welcomed**

