

# THE PORTICO COLLECTION

## THE LORRAINE



ELEVATION C



ELEVATION A



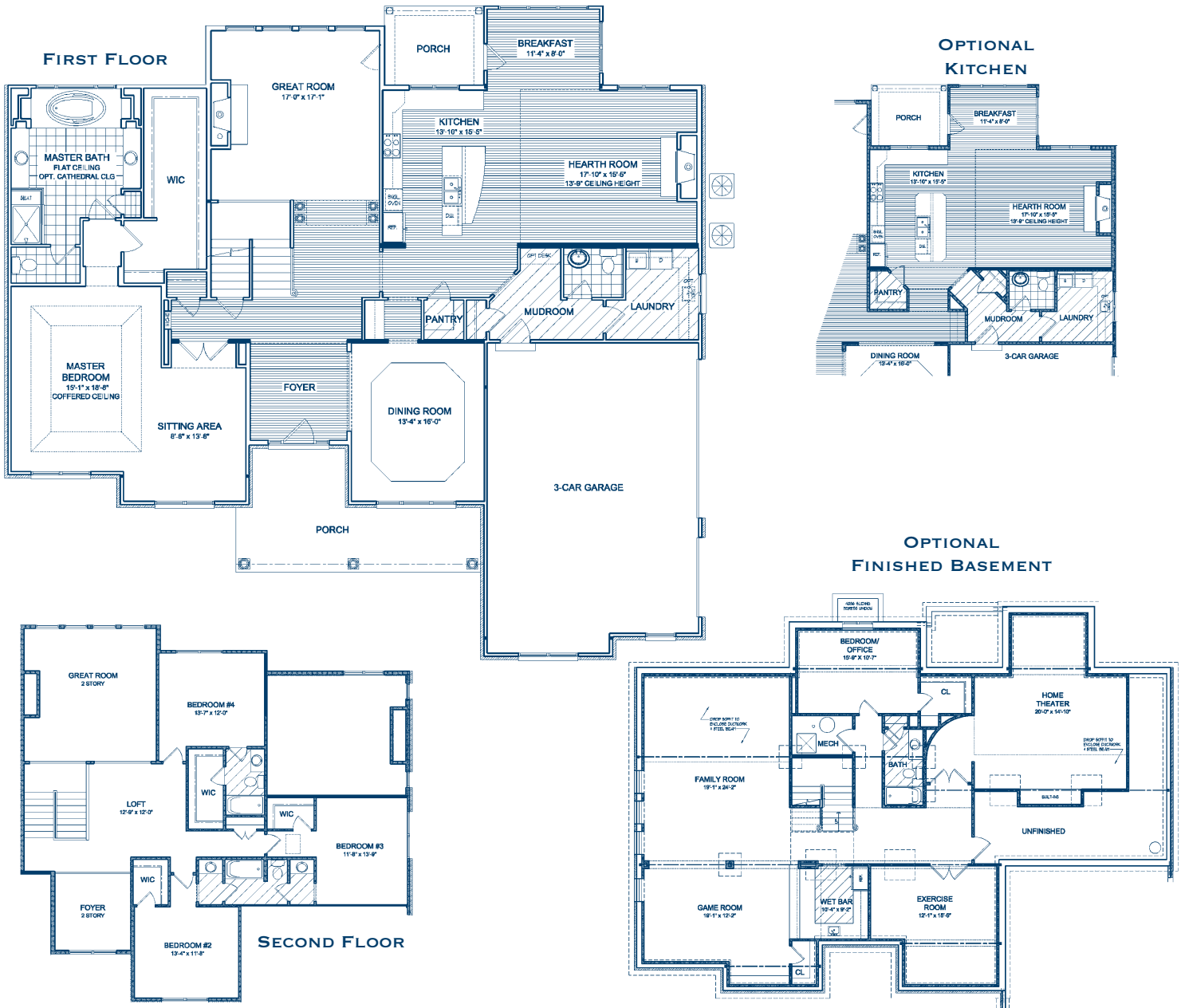
ELEVATION B



ELEVATION D

# THE PORTICO COLLECTION

## THE LORRAINE



This spectacular two-story home features four bedrooms, three and a half baths and a convenient side-entry, three-car garage. The spacious family room and cheerful kitchen, breakfast room and sunroom are the perfect gathering places to share daily activities or host informal get-togethers. For more formal entertaining, the regal dining room and library provide a touch of elegance. The first-floor master suite includes a large walk-in closet and luxurious master bath with a separate garden tub and standing shower. You'll also find that three additional bedrooms have been created with flexibility and fun in mind. A standard Jack-and-Jill bath connects bedrooms three and four.



Making Our Homes Yours.  
**FulfordHomes.com**

Plan Number: 5379 • COPYRIGHT © 2007 BY FULFORD CONSTRUCTION, INC. These plans are the sole and absolute property of Fulford Construction, Inc. Any use, copying or reproduction of these plans without the express written consent of Fulford Construction is illegal. All floorplans are based on Elevation A. Please contact the sales staff for details that may change with construction of other elevations.

NOTE: Front porches and windows may vary between elevations. Due to continued improvements in our design, there may be variations in room dimensions, door swings and window and door locations. We reserve the right to substitute materials of comparable quality. Renderings are artist's conception only and will vary from the actual home in precise detail. Please contact the Community Sales Manager for exact information and details. All information is subject to change without notice. **Realtor Cooperation Welcomed**

