

THE PORTICO COLLECTION

THE MONACO



ELEVATION C



ELEVATION A



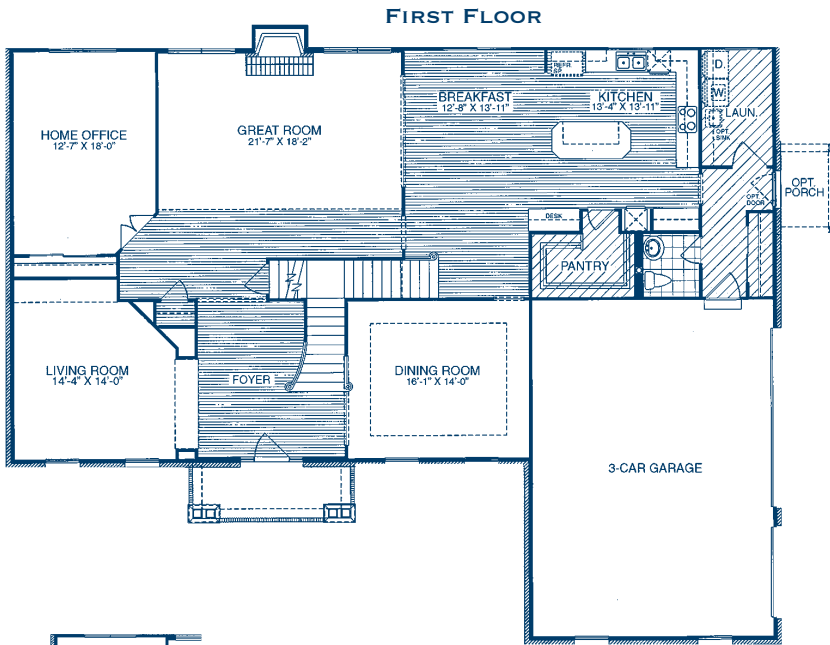
ELEVATION B



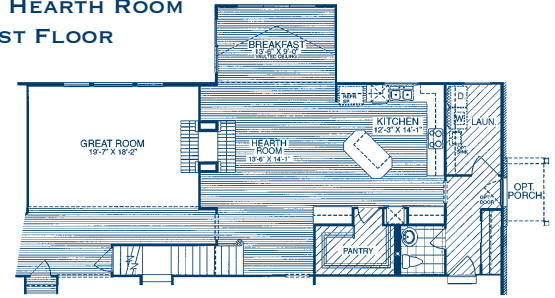
ELEVATION D

THE PORTICO COLLECTION

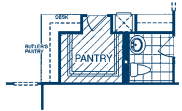
THE MONACO



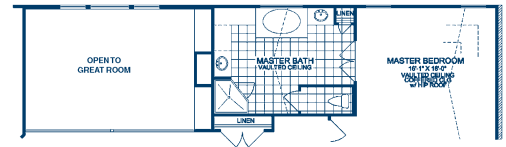
OPTIONAL HEARTH ROOM
FIRST FLOOR



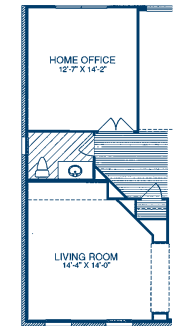
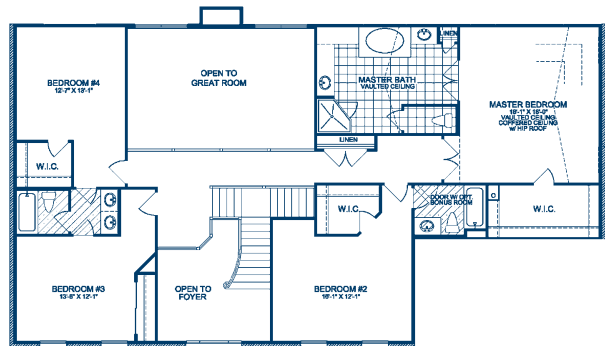
OPTIONAL
BUTLER'S PANTRY



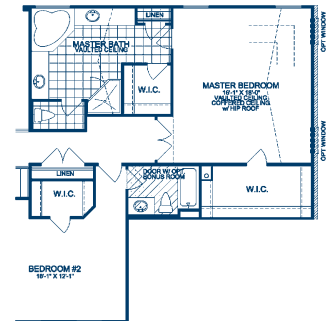
OPTIONAL
HEARTH ROOM
SECOND FLOOR



SECOND FLOOR



OPTIONAL
POWDER ROOM



OPTIONAL LUXURY
MASTER BATH

Expect the spectacular and the spacious in the Monaco, which opens with a foyer dominated by a flared staircase. Welcome your guests into your formal living and dining rooms or entertain casually in your 2-story great room. Those with larger families may want to add an optional hearth room connecting to the great room via a seethrough fireplace. When the guests are gone, retreat to your luxurious and spacious master suite with bedroom and bath. Also on the second floor, the additional bedrooms each have vast walk-ins to hold all your treasures. A Jack-n-Jill bath connects bedrooms three and four.



Making Our Homes Yours.
FulfordHomes.com

Plan Number: 2400 • COPYRIGHT © 2007 BY FULFORD CONSTRUCTION, INC. These plans are the sole and absolute property of Fulford Construction, Inc. Any use, copying or reproduction of these plans without the express written consent of Fulford Construction is illegal. All floorplans are based on Elevation A. Please contact the sales staff for details that may change with construction of other elevations.

NOTE: Front porches and windows may vary between elevations. Due to continued improvements in our design, there may be variations in room dimensions, door swings and window and door locations. We reserve the right to substitute materials of comparable quality. Renderings are artist's conception only and will vary from the actual home in precise detail. Please contact the Community Sales Manager for exact information and details. All information is subject to change without notice. **Realtor Cooperation Welcomed**

